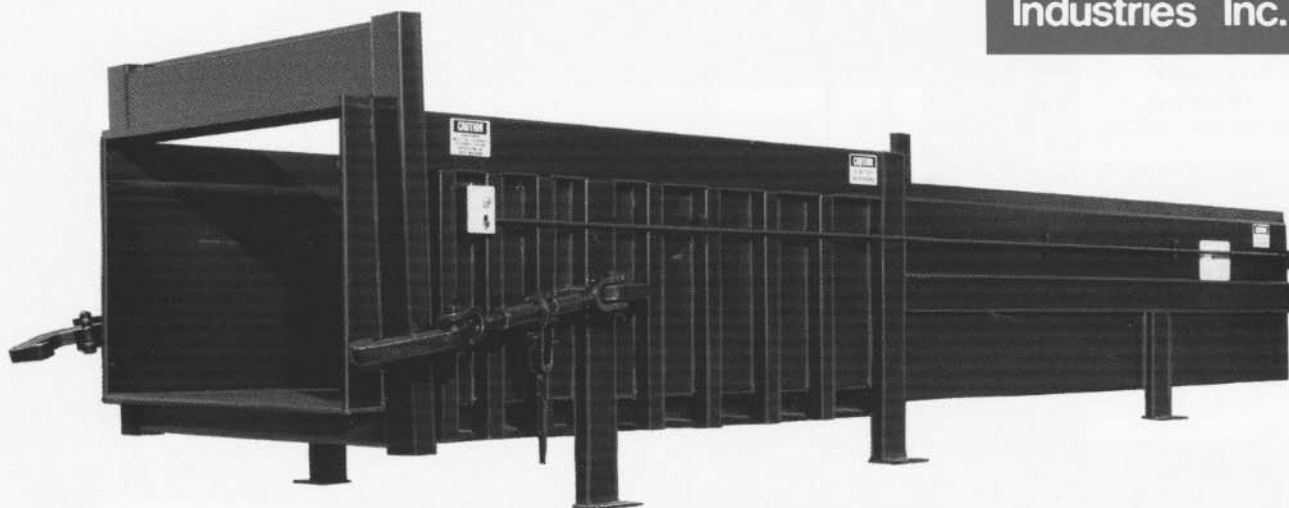


The Symbol of Excellence



Industries Inc.

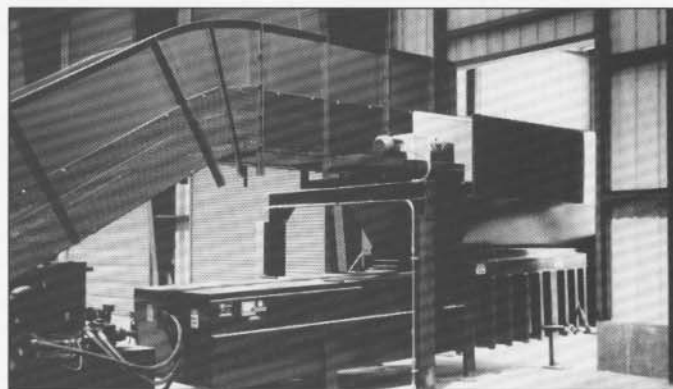


High Density, Dual Cylinder Heavy Industrial & Transfer Station Compactor

Dock-Dumper Installation



MRF (Material Recovery Facility) Installation



Model CP-6002

- Reduce Hauling Costs - Compacting waste with a dual cylinder compactor means denser container or trailer loads and fewer trips to the landfill.
- Reduce Employee Labor - Use the compactor instead of your employees to break down large bulky refuse.
- Reduce employee pilferage with a security chute system.
- Meets or Exceeds ANSI Z245.2 1992 Safety Standards for Stationary Compactors.
- Heavy Industrial/Transfer Construction for applications with 1 or more container or trailer pulls per day.
- Large 96" x 58" Clear Top Opening.

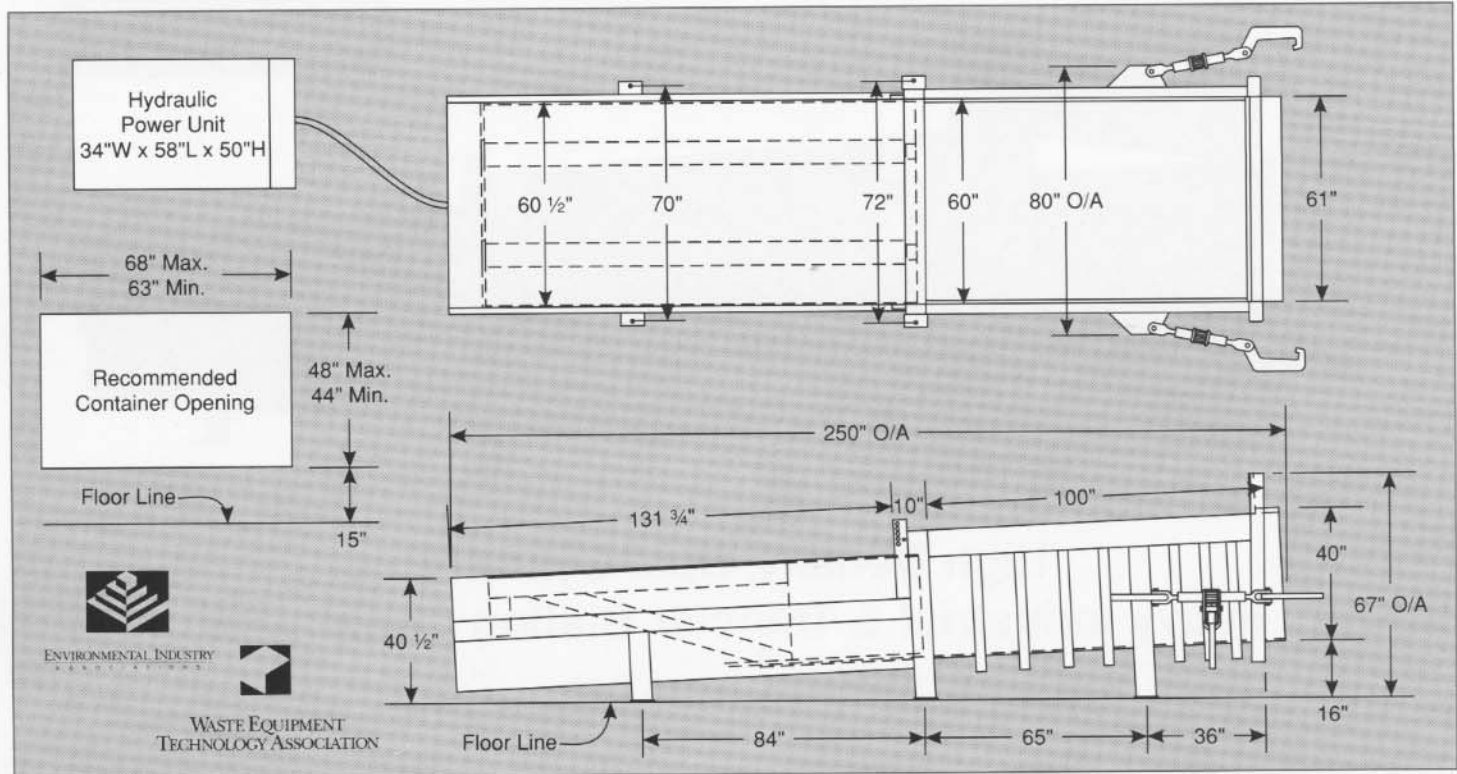
6 cu. yd. Stationary Compactor

- Engineering services for system designs that meet your individualized needs.
- American Manufacturer Electrical and Hydraulic Components - Specified for dependability, serviceability and nationwide availability.
- Outperforms and outlasts all other stationary compactors in its class.
- Industry's leading Warranty
 - Three Years Ram and Frame Weldment
 - One Year Electrical and Hydraulic Components
 - Parts and Labor

Printed On Recycled Paper

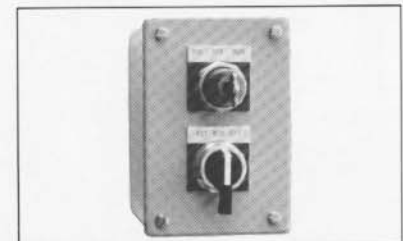
We Build Equipment the Old Fashioned Way — "WITH PRIDE"

Compactor Model	Mfr's Rating (cu. yds.)	WASTEC Rating (cu. yds.)	Clear Top Opening (in.)		Chamber Length (in.)	Ram Stroke (in.)	Ram Penetration (in.)	Force Rating (Ram PSI at stated forces lbs.)		Hydraulic Syst. Pressure PSI		Ram Face (in.)		Volume Displacement (cu. yds. per hr.)	Motor H.P.	Cycle Time (sec.)	Discharge Opening (in.)			Base Unit Weight (lbs.)
			Length	Width				Normal	Maximum	Normal	Max.	Width	Height				Width	Height	From Gnd.	
CP-6002	6	3.86	96	58	100	116	16	47.1/84,800	56.5/101,800	1500	1800	60	30	257	30	54	61	41	16	14,650



Standard Features

- Frame: Floor Abrasion Resistant Steel Plate 5/8"
 - Floor Supports (9) S4 x 7.7#
 - Structural I-beams (1) S5 X 10#
 - Side Plates 1/2"
 - Side Supports (7) TS 3 x 3 x 1/4
 - Structural Tube (2) TS 6 x 3 x 1/4
 - (1) TS 6 x 4 x 1/2
 - (1) TS 8 x 3 x 1/4
- Breaker Bar, T-1 Tool Steel 1-1/2" x 12" Vertical Bar
- Weldment 1-1/2" x 7" Horizontal Bar
- Ram: Face Plate 1"
- Floor Plate 1"
- Side Plates 3/8"
- Top Plate 1/2"
- Top Supports (15) C6 x 13#
- Guides Adjustable Nylatron Blocks
- Removable Access Panels
- Weatherhood/Safety Panels
- Ratchet Binder/Hooks: 160,000# Capacity
- Remote Power Unit
- Reservoir: 100 Gallon Capacity
- Oil - Suitable for Wide Temperature Range
- Oil Sight Gauge w/Thermometer
- Pump: 45 GPM, Continuous Displacement Vane Type
- Cylinders: (2) 6" Bore x 4.5" Rod x 116" Stroke
- UL Listed Electrical Components
- Motor: 30 HP 208 or 230/460 Volt 3 PH
- Controls In Main Panel:
 - Automatic Multicycle
 - Automatic Safety Retract
 - Automatic/Manual Selector Switch
 - Ram Position Switch
 - Full/Jam Automatic Shut-off w/Indicator
- Remote Control Station:
 - Key Lock On/Off Switch
 - Pull-To-Start/Emergency Push-To-Stop Button
- Keyed Pinning/Boost Override System Controls Mounted on Side of Compactor



Pinning/Boost Override System Controls



Remote Control (Shown with an optional Advance full load indicator)

CAUTION! This Equipment Should Be Operated By Properly Trained Personnel. Improper Use, Misuse or Lack of Maintenance could cause injury to people and/or property. Photos used in this brochure are illustrative only. Due to its commitment to quality, SP Industries' specifications are subject to change without notice to accommodate improvements to its equipment. Information contained within this literature is intended to be the most accurate available at the time of printing.

Optional Features

- Deck 10,000# Capacity
- Safety Handrails
- Safety Gate w/Interlock
- Side or Rear Load Hopper
- Enclosed Hopper w/Door
- Security Chute (Side or Rear)
- Safety Interlock System
- Deodorizer Spray System
- UL Certified Panel
- Photo Electric Start System
- TEFC Motor
- Low Oil Indicator with Shut-off
- Thermo Oil Heater
- Power Unit Weather Cover
- Container Guide
- Through Wall Ratchet Kit
- Transfer Station Hoppers and Stands

Ask Your Local Dealer For Additional Options

Distributed by:



SP INDUSTRIES, INC.
2982 Jefferson Road
Hopkins, MI 49328

Phone: 800-592-5959
In MI: (616) 793-3232
Fax: (616) 793-7451