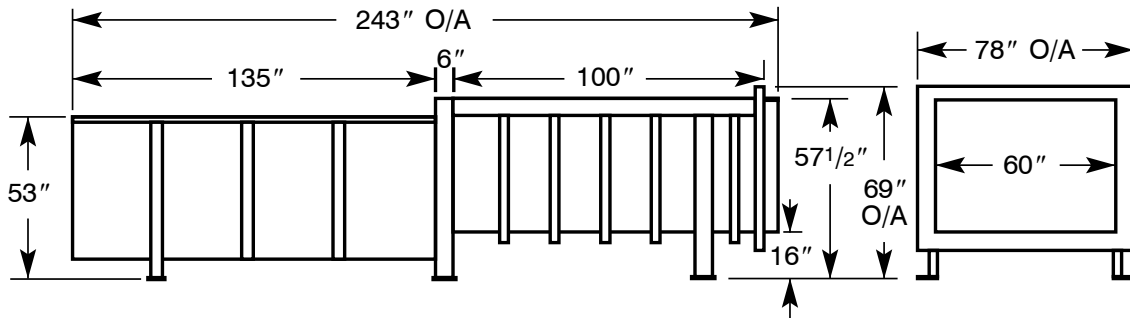


**Compactor Specifications
Model CP-6102
6 Cu. Yd. Capacity Commercial Stationary Compactor**



Material Specifications

Frame

Floor Plate, Work Hardening Steel	1/2"
Floor Plate Supports	S 4 x 7.7#
Side Plates	3/8"
Side Reinforcements	TS (3) 6 x 3 x 1/4 & (9) 3 x 3 x 1/4
Breaker Bar	1-1/2" x 8" & 1" x 4-1/2" Bar
Ram Hold Down Bars	1" x 1" Bar
Load Binders	160,000# Capacity

Ram

Face Plate	3/4"
Floor Plate	3/4"
Side Plates	3/8"
Top Plate	3/8"
Top Plate Reinforcement	C 6 x 8.2#
Nylatron Side Guide System	

Specifications

WASTEC Type Rating (Cu. Yds.)	4.1
Cycle Time (Seconds)	58
Capacity Per Hour (Cu. Yds.)	255
Clear Top Opening L x W (Inches)	96 x 58
Ram Penetration (Inches)	16
Ram Face Dimensions (Inches)	60 x 32
Ram Face P.S.I./Packing Force (Lbs.)	
Normal	50.5/69,300
Maximum	60.6/101,800
Operating Pressure (PSI)	
Normal	1,800
Maximum	2,000
Cylinder Bore, Rod & Stroke (Inches)	(2) 6 x 4.5 x 116
Motor (HP)	20
Pump (GPM)	25
Oil Reservoir Capacity (Gallons)	75
Shipping Weight w/Power Unit(Lbs.)	12,350



SP Industries, Inc., 2982 Jefferson Rd., Hopkins, MI 49328
Phone: 800-592-5959, In MI (269) 793-3232, Fax (269) 793-7451