

The Symbol of Excellence



CP-8002-D shown with the power unit installed on the rear deck and the options: Main Controls Mounted on the Compactor, Strobe Warning Light, and a Power Unit Cover. The container binder brackets are shown lowered to align with the binder hook pockets on the transfer trailer at this particular installation site.

Transfer Station Compactor

Transfer Station Installation



MRF (Material Recovery Facility) Installation



Model CP-8002 & 8002-D

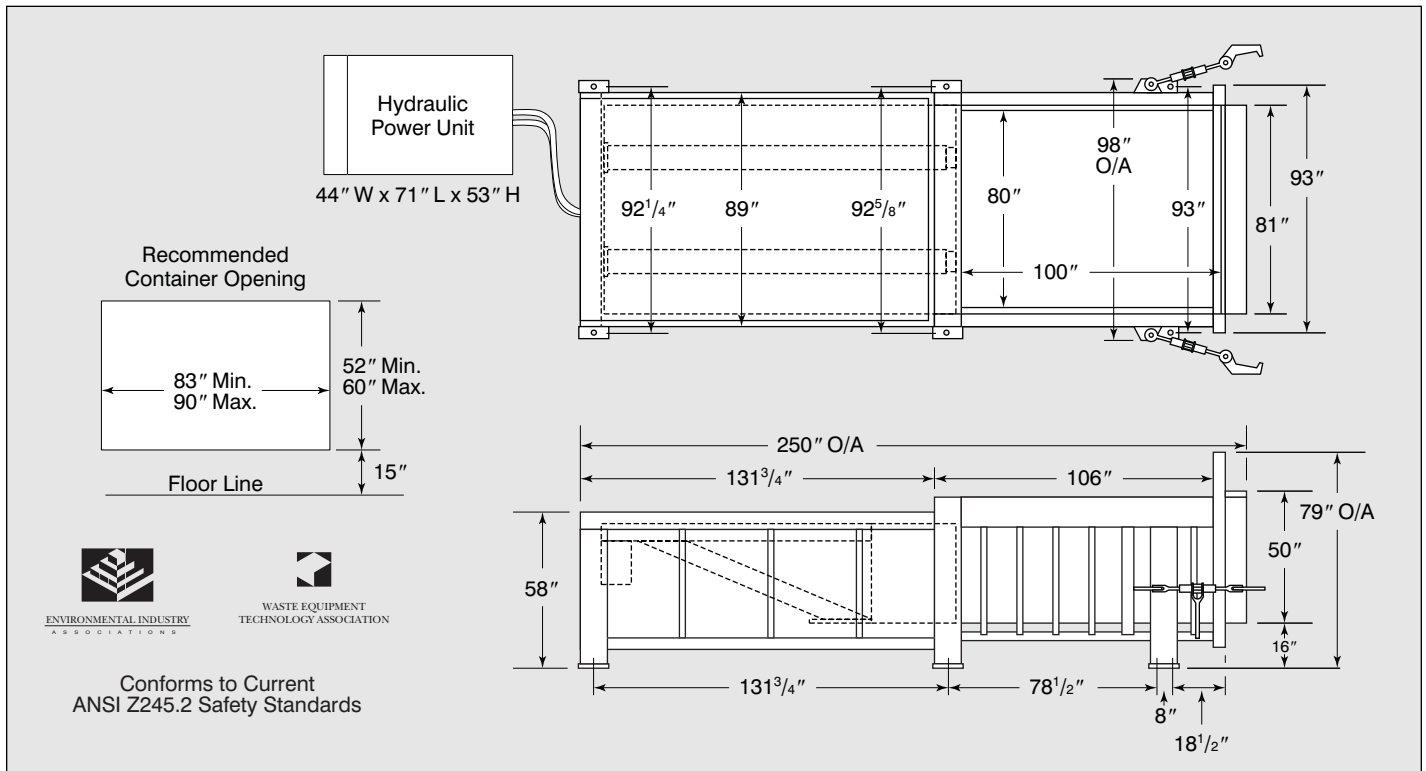
8 Cu. Yd. Stationary Compactors

- Reduce Hauling Costs - Compacting waste with a dual cylinder compactor will result in denser container or trailer loads and fewer trips to the landfill.
- Reduce Employee Labor - Use the compactor instead of your employees or power equipment to break down large bulky refuse.
- Meets or exceeds current ANSI Z245.2 Safety Standards for Stationary Compactors.
- Heavy Industrial Construction for applications with daily container or trailer pulls.
- Large 100" x 77-1/2" Clear Top Opening.
- Engineering services for system designs that meet your individualized needs.
- American Manufacturer Electrical and Hydraulic Components - Specified for dependability, serviceability and nationwide availability.
- Outperforms and outlasts all other stationary compactors in its class.
- Industry's leading warranty
 - Three Years - Ram and Frame Weldment
 - One Year - Electrical and Hydraulic Components Parts and Labor



Printed on Recycled Paper

Compactor Model	Mfr's. Rating (cu. yds.)	WASTEC Rating (cu. yds.)	Clear Top Opening (in.)		Chamber Length (in.)	Ram Stroke (in.)	Ram Penetration (in.)	Force Rating (Ram PSI at stated forces lbs.)		Hydraulic Syst. Pressure PSI		Ram Face (in.)		Volume Displacement (cu. yds. per hr.)	Motor H.P.	Cycle Time (sec.)	Discharge Opening (in.)			Base Unit Weight (lbs.)
			Length	Width				Normal	Maximum	Normal	Max.	Width	Height				Width	Height	Frm Gnd	
CP-8002	8	6	96	77.5	100	116	16	36.4/101,800	43.4/121,600	1800	2150	80	35	554	50	39	81	50	16	22,100
CP-8002-D	8	6	96	77.5	100	116	16	49.5/138,500	59.1/165,500	1800	2150	80	35	393	50	55	81	50	16	24,100

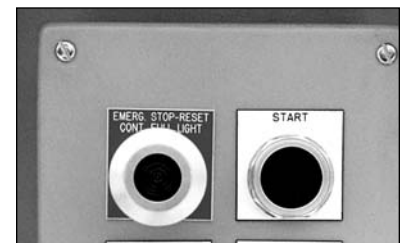


Standard Features

- Frame: Floor, Work Hardening Steel 5/8"
 - Floor Supports (1) S4 x 7.7#
 - Structural I-beams (11) S5 x 10#
 - Structural Tube (1) TS 8 x 4 x 1/2"
 - Side Plates 1/2"
 - Side Supports (10) TS 4 x 3 x 1/4"
 - Structural Tube (4) TS 6 x 4 x 1/4"
 - (6) TS 10 x 4 x 1/4"
- Breaker Bar: T-1 Tool Steel 2" x 15" Vertical Bar
- Weldment 2" x 10" Horizontal Bar
- Ram: Face Plate 1"
- Floor Plate 1"
- Side Plates 3/8"
- Top Plate 1/2"
- Top Supports (15) C6 x 13#
- Guides Adjustable Nylatron Blocks
- Cylinders: CP-8002 - (2) 6" B x 4.5" R x 150" S
- CP-8002-D - (2) 7" B x 5" R x 150" S
- Motor: 50 HP 230/460 Volt 3 Phase, ODP
- Pump: 63 GPM, Continuous Displacement Vane Type
- Reservoir: 200 Gallon
- Remote Power Unit
- Oil - Suitable for a Wide Temperature Range
- Oil Sight Gauge with Thermometer
- UL Listed Electrical Components
- Controls in Main Panel
 - Automatic Multicycle
 - Automatic Safety Retract
 - Automatic/Manual Selector Switch
 - Ram Position Switch
- Remote Control Station
 - Key Lock On/Off Switch
 - Push/Pull Emergency Stop/Start Button
 - Full/Jam Automatic Shut-off with Indicator
- Keyed Pinning/Boost Override System
- Controls Mounted on the Side of the Compactor
- Removable Access Panels
- Ratchet Binder/Hooks: Heavy Duty Capacity



Pinning/Boost Override System Controls



Remote Control
(Shown with an optional
advance full load indicator)

Optional Features

- Deck - 10,000# Capacity
- Safety Handrails
- Safety Gate with Interlock
- Side or Rear Load Hopper
- Transfer Station Hopper
- Safety Interlock System
- Deodorizer Spray System
- UL Certified Panel and Controls
- Photo Electric Start System
- TEFC Motor
- Low/Hot Oil Indicator with Shut-off
- Thermo Oil Heater
- Power Unit Weather Cover
- Container and Trailer Guides
- Through Wall Ratchet Kit
- Hydraulic Trailer Lock
- Transfer Trailer Stand

Ask Your Local Dealer For Additional Options

!CAUTION! This Equipment Should Be Operated By Properly Trained Personnel. Improper Use, Misuse or Lack of Maintenance could cause injury to people and/or property. Photos used in this brochure are illustrative only. Due to its commitment to quality, SP Industries' specifications are subject to change without notice to accommodate improvements to its equipment. Information contained within this literature is intended to be the most accurate available at the time of printing.

Distributed By:



SP INDUSTRIES, INC.
2982 Jefferson Rd.
Hopkins, MI 49328
www.sp-industries.com

Phone: 616-793-3232
Toll Free: 800-592-5959
Fax: 616-793-7451
E-mail: info@sp-industries.com