

Industries, Inc. **Systems that Work!**

Precrusher/Compactors



PC-6000 with power unit mounted on rear deck and equipped with power unit weather cover.

3, 4, 6, 7, & 9 cu. yd. Capacity



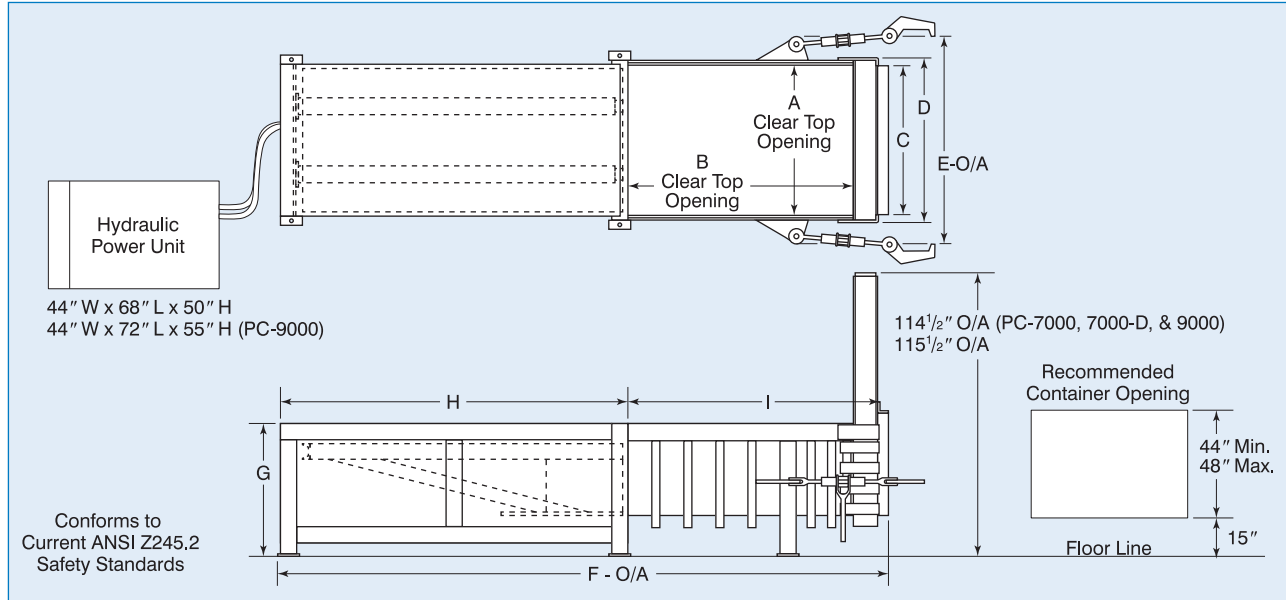
Difficult to compact recyclables including steel shipping crates, 55 gallon drums, 5 gallon pails, white goods, wooden spools, and pallets shown before and after compaction.

Learn More



Specifications

Precrusher/ Compactor Model	Mfr's Ratings (cu. yds.)	WASTEC Type Rating (cu. yds.)	Ram Stroke (in.)	Ram Penetration (in.)	Force Rating (Ram PSI at stated forces lbs.)		Hydraulic Syst. Pressure PSI		Ram Face (in.)		Volume Displacement (cu. yds. per hr.)			Cycle Time (sec.)		Base Unit Weight (lbs.)
					Normal	Max.	Normal	Max.	Width	Height	Precrusher	Compactor Only	Motor H.P.	Precrusher	Compactor Only	
PC-3000	3	2.3	74	16	56.5/101,800	66/118,800	1800	2100	60	30	154	231	30	54	36	20,900
PC-3000-D	3	2.3	74	16	76.9/138,500	89.8/161,600	1800	2100	60	30	117	158	30	69	51	21,150
PC-4000	4	2.9	90	16	56.5/101,800	66/118,800	1800	2100	60	30	169	239	30	62	44	22,500
PC-4000-D	4	2.9	90	16	76.9/138,500	89.8/161,600	1800	2100	60	30	131	169	30	80	62	22,900
PC-6000	6	3.86	116	16	56.5/101,800	66/118,800	1800	2100	60	30	188	248	30	74	56	24,500
PC-6000-D	6	3.86	116	16	76.9/138,500	89.8/161,600	1800	2100	60	30	143	176	30	97	79	24,900
PC-7000	7	5.1	116	16	42.4/101,800	49.5/118,800	1800	2100	80	30	248	328	30	74	56	27,300
PC-7000-D	7	5.1	116	16	57.7/138,500	67.3/161,600	1800	2100	80	30	191	234	30	97	79	27,700
PC-9000	9	6.9	15	16	57.7/138,500	67.3/161,600	1800	2100	80	30	292	382	50	85	65	31,700



Standard Specifications

Dimension	PC-3000 & D	PC-4000 & D	PC-6000 & D	PC-7000 & D	PC-9000
A	57	56	57	76	76
B	47.75	64	89.5	89.5	123.75
C	61.5	61.5	61.5	82.5	82.5
D	70	69.75	69.75	89.75	89.75
E - O/A	81	81	81	101	101
F - O/A	160	194	247	247	323.75
G	51.5	51.5	51.5	51.5	51.5
H	96	116	142	142	182
I	58	74	100	100	134
J	63" Min. / 68" Max.	63" Min. / 68" Max.	63" Min. / 68" Max.	83" Min. / 88" Max	83" Min. / 88" Max.

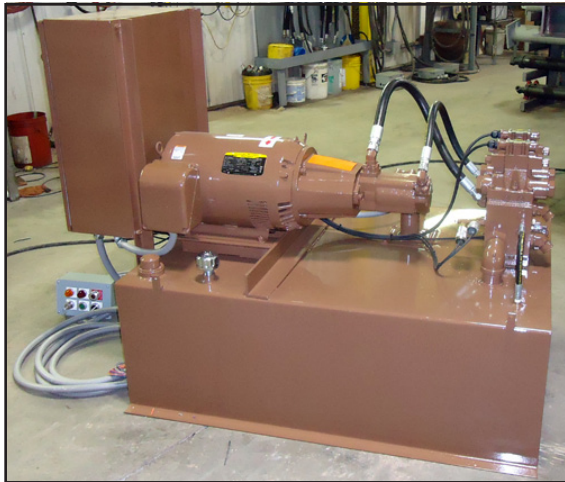
Compactor Material Specifications

Frame: Floor	5/8"	5/8"	5/8"	5/8"	1"
Floor Supports	(1) S 5 x 10# (6) S 4 x 7.7#	(1) S 5 x 10# (7) S 4 x 7.7#	(1) S 5 x 10# (7) S 4 x 7.7#	(1) S 6 x 17.25# (11) S 5 x 10#	(1) 8" x 6" x 1/2" Tube (14) S 6 x 12.5#
Sides	1/2"	1/2"	1/2"	1/2"	1/2"
Side Supports	3" x 3" x 1/4" Tube 6" x 3" x 1/4" Tube 8" x 3" x 1/4" Tube	3" x 3" x 1/4" Tube 6" x 3" x 1/4" Tube 8" x 3" x 1/4" Tube	3" x 3" x 1/4" Tube 6" x 3" x 1/4" Tube 8" x 3" x 1/4" Tube	3" x 3" x 1/4" Tube 6" x 3" x 1/4" Tube 8" x 3" x 1/4" Tube	3" x 3" x 1/4" Tube 8" x 3" x 1/4" Tube 10" x 3" x 1/4" Tube
Main Breaker Bar	1-1/2" x 8" Vertical Cold Rolled Steel Bar				
Secondary Breaker Bar	8" x 6" x 1" Steel Angle				
Ram: Face	3/4"	3/4"	1"	1"	1"
Floor	3/4"	3/4"	1"	1"	1"
Top	1/2"	1/2"	1/2"	1/2"	1/2"
Top Supports	(11) C 5 x 6.7#	(13) C 5 x 6.7#	(15) C 6 x 13#	(15) C 6 x 13#	(18) C 6 x 13#
Sides	3/8"	3/8"	3/8"	3/8"	3/8"
Guides	Adjustable Nylatron Blocks				

Precrusher Material Specifications

Frame:	Gate Track Fabricated from 1" Cold Rolled, Steel Bar				
Gate: Front Wall	1/2"	1/2"	1/2"	1/2"	1/2"
Rear Wall	1"	1"	1"	1"	1"
Supports 6" x 6" x 3/8" & 6" x 4" x 3/8" Structural Steel Tubes (6" x 6" x 1/2" & 6" x 4" x 1/2" Structural Steel Tubes on PC-9000)					

Features



Precruiser/Compactor Remote Power Unit

The power unit can be placed in any location to protect it from weather, accidents, and vandalism.



Standard Controls

The remote controls consist of a Key Lock On/Off Switch, Start Button, Stop Button, Compactor/Precruiser Mode Switch, and Container Full Warning Light. This control unit is shown with an optional Hot/Low Oil Indicator and Overfill Warning Light.

Standard Features

- Removable Access Panels
- Ratchet Binders and Hooks
- Remote Power Unit w/ 10' hoses
- Reservoir: PC-3000 & D, 4000 & D, 6000 & D, 7000 & D - 140 Gallon
PC-9000 - 200 Gallon
- Oil - All Weather Hi-grade (-40° F Pour Point)
- Oil Sight Gauge with Thermometer
- Cylinders: PC-3000, 4000, 6000, 7000 - (2) 6" Bore x 4.5" Rod
PC-3000-D, 4000-D, 6000-D, 7000-D, & 9000 - (2) 7" Bore x 5" Rod
- Pump: PC-3000 & D, 4000 & D, 6000 & D, 7000 & D - 18/25.5 GPM, Hi-Lo, Vane; PC-9000 - 21/45 GPM, Hi-Lo, Vane
- UL Listed Electrical Components
- Motor: PC-3000 & D, 4000 & D, 6000 & D, 7000 & D - 30 HP
230/460 3PH PC-9000 - 50 HP 460 3PH
- Automatic Multicycle System
- Full/Jam Automatic Shut-off
- Adjustable Timer Inside Main Control Panel to Set 1-8 Precrush Cycles
- Keyed Pinning Boost/Override & Precruiser Gate/Compactor Ram Jog Control Station Mounted on the Front Left Hand Side of the Machine
- Remote Control Station:
 - Key Lock On/Off Switch
 - Start Push Button
 - Stop Push Button with Container Full Light
 - Compactor/Precruiser Selector Switch



Pinning/Boost Override & Precruiser Gate/Compactor Ram Jog System Controls

These controls are mounted on the left-front of the compactor charge opening. This system is key activated and allows the operator to manually extend and retract the ram, raise and lower the gate, and boost the pressure for pinning the container. The Pinning/Boost Override System provides additional force to clear the compaction chamber allowing the hauler to pin the refuse load into the container for transportation.

Optional Features

- Decks - 1,000#, 10,000# and Special Capacities
- Safety Hand and Toe Rails
- Safety Gate with Interlock
- Side or Rear Load Hopper
- Full Enclosure
- Transfer Station Hopper
- Transfer Trailer Loading Stand
- Hydraulic Cart Dumper System
- Pinning Tunnel(s) Built into the Ram Face
- Ram & Compaction Chamber Bar Grating for High Volume Wood Waste
- Container Guide System
- Through Wall Ratchet Binder System
- Safety Interlock System
- Deodorizer Spray System
- UL Certified Panel
- Advance Full Load Indicator
- TEFC Motor
- Low/Hot Oil Shutdown with Indicator
- Thermo Oil Heater
- Power Unit Weather Shield or Cover

!CAUTION! This equipment should be operated by properly trained personnel. Improper use, misuse or lack of maintenance could cause injury to people and/or property. Photos used in this brochure are illustrative only. Due to its commitment to quality SP Industries' specifications are subject to change without notice to accommodate improvements to its equipment. Information contained within this literature is intended to be the most accurate available at the time of printing.

Quality Equipment Built With Pride

- 3, 4, 6, 7 & 9 cubic yard capacity models
- Designed for heavy industrial and transfer station applications
- Standard controls for precrusher or compactor-only operation
- Up to 8 precrush cycles allow for the break down of materials that are difficult to compact
- "Compactor Only" mode reduces the cycle time & increases throughput of refuse into the compaction container
- Integrated unit provides maximum strength and integrity
- Precrusher gate is not an add-on to a standard compactor
- Constructed of AISI grade steel and structural steel reinforcements
- Hydraulic and electrical components specified for their reliability and availability
- Engineering and design services available for both standard and special applications
- Meets or exceeds current ANSI Z245.2 Safety Standards for Compaction Equipment
- Industry's leading warranty
 - 3 years on ram and frame weldment
 - 1 year on hydraulic and electrical components



Precrusher/Compactor Compaction Chamber Supports

The charge chamber is constructed with AISI grade steel plates and supported with structural steel tubes on the sides as well as I-beams on the bottom. The precrusher gate track is fabricated from 1" cold rolled steel.

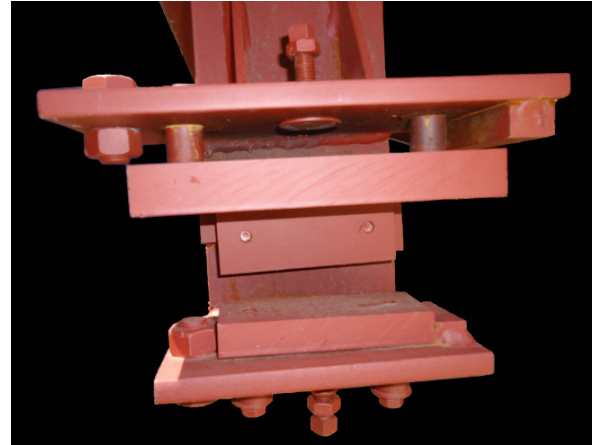
Front Wall of the Gate and the Wear Plates

The front wall of the precrusher gate is constructed with 1/2" steel plates. The lower sections of the outside plates are removable wear liners and cylinder access panels.



Nylatron Ram Guide System

The ram guide system is constructed with a set of Nylatron blocks that run along a steel tube on each side of the ram. This guide system maintains the ram against bucking and fishtailing during operation.



Ram Wiper Blade

The floating wiper blade is a 1" x 3/8" steel bar attached to a hinged mechanism that allows it to ride on top of the ram. The wiper cleans the top of the ram during backward movement to prevent material build-up behind the ram.



Distributed By:



We are Social!



SP INDUSTRIES, INC.
2982 Jefferson Road
Hopkins, MI 49328

Phone: 800.592.5959 or 269.793.3232
Fax: 269.793.3232
Web: www.sp-industries.com
Email: sp_industries_inc@sp-industries.com